

SUGATSUNE

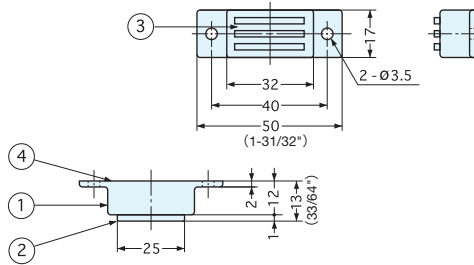
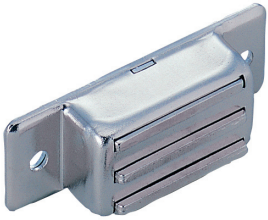
Industrial Component Hardware

Sugatsune announces its new hardware for high temperature applications. These magnetic catches are able to function in temperature environments of up to 250° and are uniquely designed while ensuring durability through its high quality materials.

HIGH TEMPERATURE MAGNETIC CATCH



MC-0083HP-70, 140



- Suitable for high temperature environments up to 250°.
- Recommended strike plate:

• AS-68

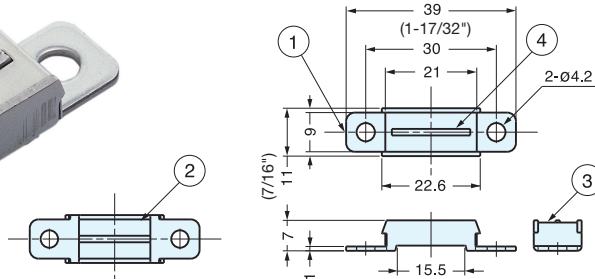
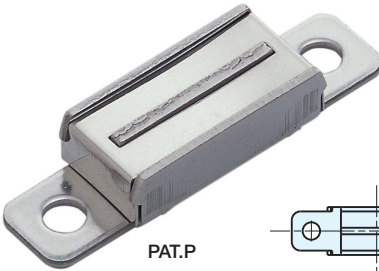
No.	Part Name	Material	Finish
①	Housing	304 Stainless Steel	Plain
②	Yoke	430 Stainless Steel	Plain
③	Magnet	Samarium Cobalt	-
④	Back Plate	304 Stainless Steel	Plain
⑤	Counterplate	Sold Separately. Recommended AS-68	

Item No.	Magnetic Force (kg)	Weight (g)	Box (pcs)	Carton (pcs)
MC-0083HP-70	7	40	40	200
MC-0083HP-140	14			

HIGH TEMPERATURE MAGNETIC CATCH



MC-YN005HP-20, 50



- Suitable for high temperature environments up to 250°.
- Thin magnetic catch ideal for tight spaces.
- Recommended strike plate:

- MC-YN005 → MC-YN001U
- MC-YN005HP → MC-JM49

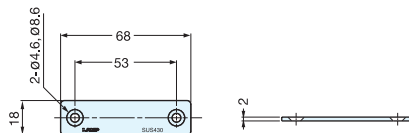
No.	Part Name	Material
①	Yoke	430 Stainless Steel
②	Center Yoke	430 Stainless Steel
③	Cover	304 Stainless Steel
④	Magnet	Ferrite (MC-YN005) Samarium Cobalt (MC-YN005HP)

Item No.	Magnetic Force (kg)	Weight (g)	Box (pcs)	Carton (pcs)
MC-YN005	3	9	100	1000
MC-YN005HP-20	2	11		
MC-YN005HP-50	5.1			

STAINLESS STEEL COUNTER PLATES



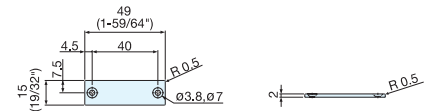
AS-68



Material	Finish	Weight (g)	Box (pcs)	Carton (pcs)
430 SUS	Polished	17	100	1000



MC-JM49



Material	Finish	Weight (g)	Box (pcs)	Carton (pcs)
316 SUS	Polished	10	100	1000

- High corrosion resistance.
- Ideal for applications where rust is an issue.

Cleanroom design is perhaps the most important factor in protecting your product from contamination. Choosing the right type of hardware is the first step in this process. Sugatsune has been designing and manufacturing high quality clean room components for various types of applications in serving industries including those in the biomedical, pharmaceutical and aerospace/military industries.

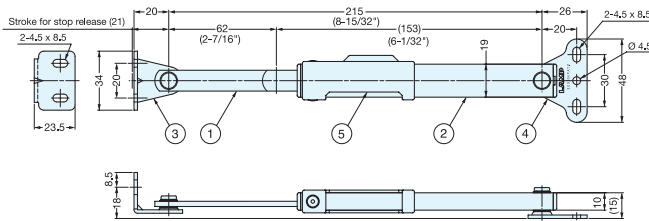
CLEANROOM LID STAY

LOAD CAPACITY
15 kg
33 lbs

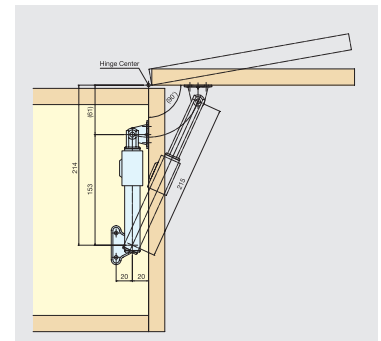
NO SCREW

STAINLESS 304 STEEL

LB-CV215A



- Holds lid or panel in fully opened position.
- Plastic bushing and end cap to minimize particles.
- No metal-to-metal contact.
- Ideal for cleanroom, semiconductor and food industry application.
- Non-handed.
- Can be used singly or in pairs.



*Lid stay must be installed parallel to the sidewall.

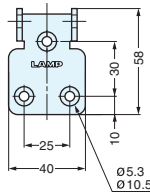
Item No.	Load Capacity (kg)	Weight (g)	Box (pcs)	Carton (pcs)
LB-CV215A	15 (33 lbs)	-	10	100

Material	Finish
304 Stainless Steel	Plain
ABS	White

DRAW LATCH

STAINLESS 316 STEEL

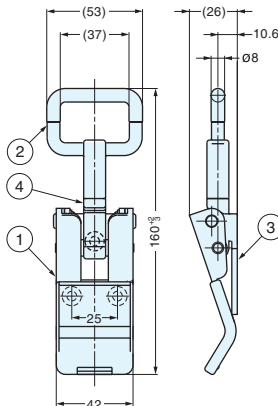
STF-CV150



No.	Part Name	Material
①	Handle	316 Stainless Steel
②	Hook	SCS14 Stainless Steel
③	Base	316 Stainless Steel
④	Hook Screw	SCS14 Stainless Steel
⑤	Handle Cover	Polypropylene

- No metal-to-metal contact.
- Ideal for cleanroom application.
- When used in combination with the TF40C counter plate (below) will have 300kg load capacity. (Optional)

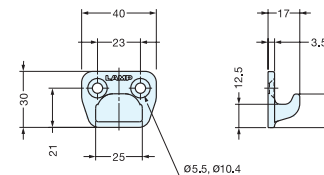
Item No.	Load Capacity (kg)	Weight (g)	Material	Finish
STF-CV150	330	248	316 Stainless Steel	Polished
STF-CV150M				Mirror



HEAVY DUTY COUNTER PLATE

STAINLESS 316 STEEL

TF-40C



Item No.	Material	Finish	Weight (g)	Box (pcs)	Carton (pcs)
TF40C-ST	SCC14 Stainless Steel (Similar to SUS316)	Polished	48	5	20
TF40C-STM		Mirror			



Visit online or view catalog for more sizes and products.



Sugatsune America, Inc.

18101 Savarona Way, Carson, CA 90746
Phone: (888) 557-5267 • Fax: (310) 329-0819
<http://www.sugatsune.net> • sales@sugatsune.net